

Notification/ Application Number: 11/0042/TCA

Address: Playing Field, Wray with Botton Primary School, Wray

Proposal: Fell a x2 sycamore

Amended Report: 15th June 2011 / For Clarification

Assessment:

The trees in question are sycamore trees established towards a corner of the playing field. No arboriculture reasons have been identified for the removal of the trees. However, a discussion with the agent acting on behalf of the applicant cited reasons of encroaching branches affecting no.2 Oaklea, Main Street, Wray.

In addition to the x2 sycamore there are x2 oak trees. A single sycamore, and x2 oak are in a good overall condition and free from significant structural defects or serious pest or disease that may otherwise support their removal. However, the second sycamore in question and subject of the original 211 Notice has a large wound to the main stem, although there is no evidence of decay being present we consider this wounding to be sufficient to adversely impact on the long term retention value of this tree and as such do not consider it worthy of inclusion within a Tree Preservation Order. The single sycamore and x2 oak trees have been identified as a group – G1.

The trees are clearly visible from a number of private properties, from within the playing field and a number of public vantage points. They make an important contribution to the greening and amenity value of the site and locality. They are also an important resource for wildlife, all of which will increase with continued growth and maturity of the trees.

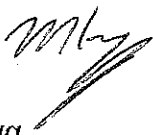
Lancaster City Council does not support the removal of healthy, trees to reduce encroachment, or eliminate leaf littering identified this policy can be viewed within Lancaster City Council's Tree Policy 2010.

The amenity value of this tree has been assessed using a Tree Evaluation Method for Preservation Orders (TEMPO).

Decision:

Lancaster City Council objects to the removal of x1 sycamore identified with x2 oak trees as G1 because they have important amenity value and make a significant contribution to the character of the locality. As such it is our intention to serve a Tree Preservation Order no. 488 (2011).

TEMPO: A score of 15+ was accumulated supporting the action of serving a tree preservation order.



Maxine Knagg
Tree Protection Officer
Regeneration & Policy Services

15th June 2011

17.6.11

TEMPO EVALUATION UNCHANGED

MH

TREE EVALUATION METHOD FOR PRESERVATION ORDERS (TEMPO):

SURVEY DATA SHEET & DECISION GUIDE

Date: 27/4/11	Surveyor: MH
---------------	--------------

Tree details			2x Sycamore
TPO Ref: 488(2011)	Tree/Group No: G1	Species:	1x oak
Owner (if known): Lancashire C.C.			
Location: Playngfield, Wray Primary School, Wray.			

Part 1: Amenity assessment

a) Condition & suitability for TPO:

Refer to Guidance Note for definitions

- 5) Good Highly suitable
- ③ Fair Suitable
- 1) Poor Unlikely to be suitable
- 0) Unsafe Unsuitable
- 0) Dead Unsuitable

Score & Notes ③

b) Remaining longevity (in years) & suitability for TPO:

Refer to 'Species Guide' section in Guidance Note

- 5) 100+ Highly suitable
- ④ 40-100 Very suitable
- 2) 20-40 Suitable
- 1) 10-20 Just suitable
- 0) <10 Unsuitable

Score & Notes ④
Remaining longevity identified as minimum with good management

c) Relative public visibility & suitability for TPO:

Consider realistic potential for future visibility with changed land use; refer to Guidance Note

- 5) Very large trees, or large trees that are prominent landscape features Highly suitable
- ④ Large trees, or medium trees clearly visible to the public Suitable
- 3) Medium trees, or larger trees with limited view only Just suitable
- 2) Small trees, or larger trees visible only with difficulty Unlikely to be suitable
- 1) Young, v. small, or trees not visible to the public, regardless of size Probably unsuitable

Score & Notes
④ visible from School + public areas. Will increase with maturity trees.

d) Other factors

Trees must have accrued 7 or more points (with no zero score) to qualify

- 5) Principal components of arboricultural features, or veteran trees
- 4) Members of groups of trees important for their cohesion
- 3) Trees with identifiable historic, commemorative or habitat importance
- 2) Trees of particularly good form, especially if rare or unusual
- ① Trees with none of the above additional redeeming features

Score & Notes ①

Part 2: Expediency assessment

Trees must have accrued 9 or more points to qualify; refer to Guidance Note

- ⑤ Known threat to tree
- 3) Foreseeable threat to tree
- 2) Perceived threat to tree
- 1) Precautionary only
- 0) Tree known to be an actionable nuisance

Score & Notes ⑤
Notification received to fell 2x Sycamore - overhanging branches.

Part 3: Decision guide

- Any 0 Do not apply TPO
- 1-6 TPO indefensible
- 7-10 Does not merit TPO
- 11-14 TPO defensible
- ① 15+ Definitely merits TPO

Add Scores for Total:
17

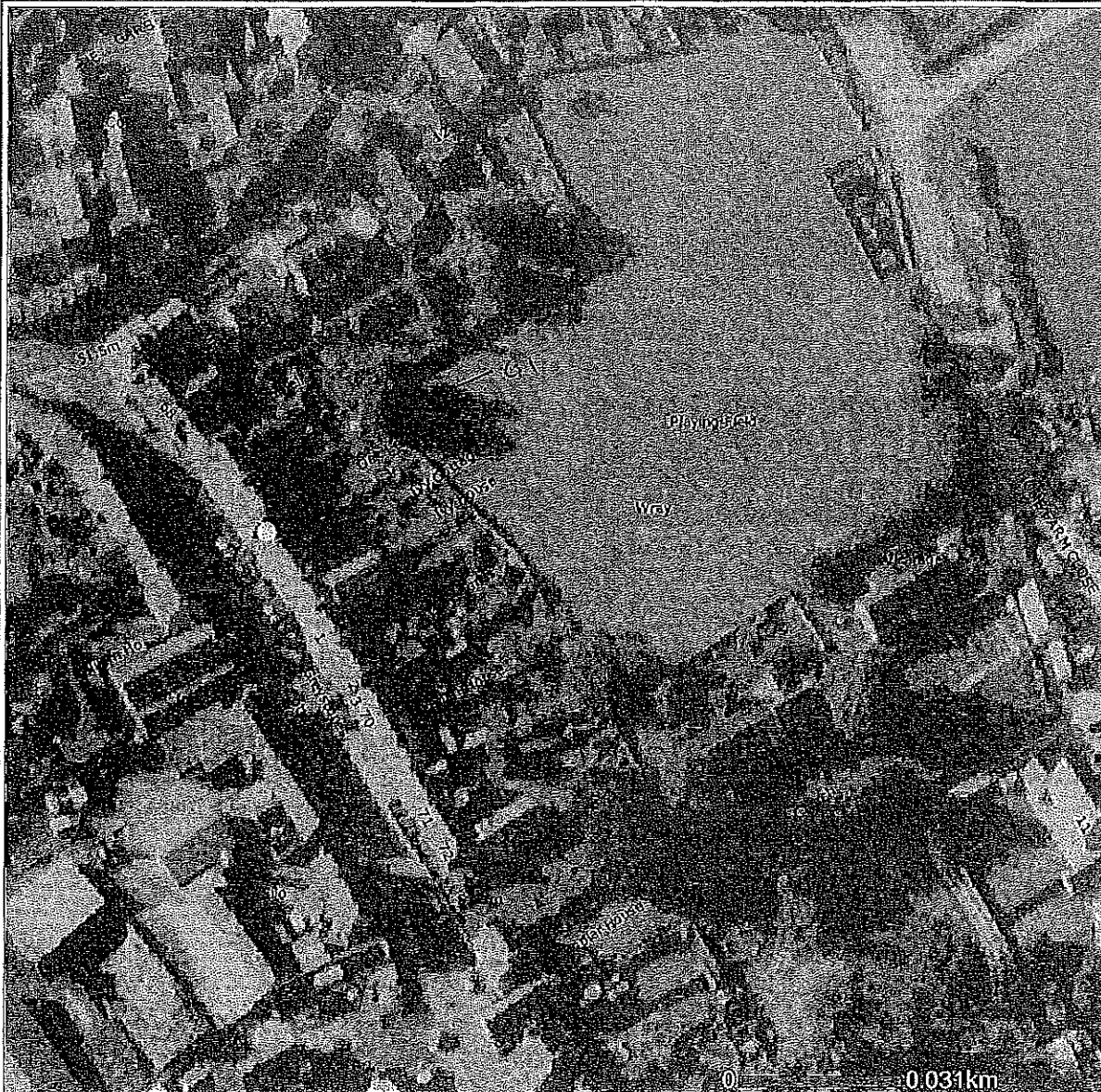
Decision:
Save TPO

Tree Preservation Order 488 (2011)



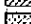

Playing Field, Wray with Botton Primary School
School Lane, Wray

LANCASTER
CITY COUNCIL

Promoting City, Coast & Countryside



Legend

-  Uniform TPO Points
-  Uniform TPO Polygons
-  Tree Preservation Orders
-  Annotation
- Aerial Photos 2000

© Crown copyright and database rights 2011. Ordnance Survey
100025403

Map Information

Scale:	1: 1250
Date:	28.4.2011